

INTERMEDIATE LABORATORY

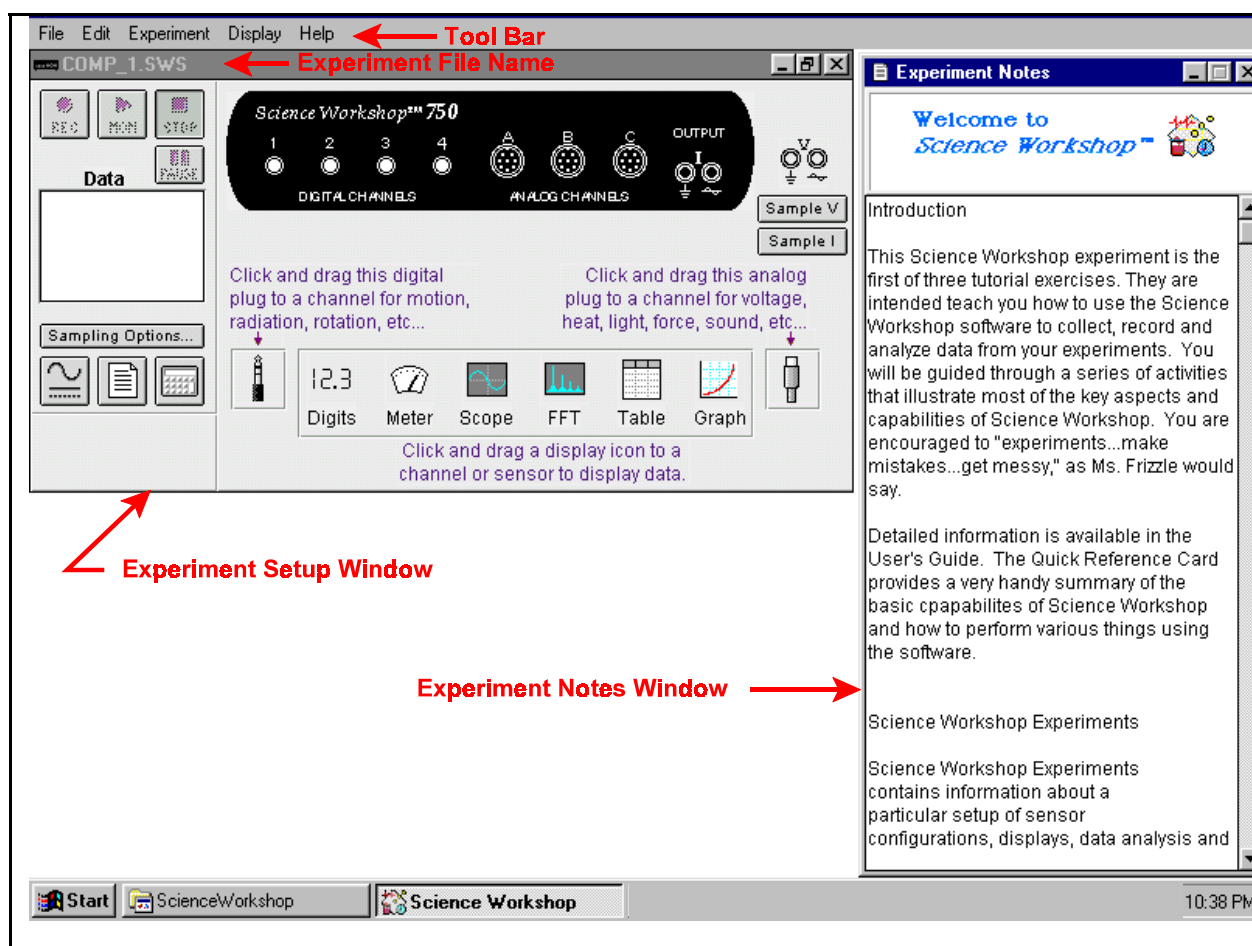
PHYX 3870

Science Workshop Competency Test

How to Begin

To begin your *Science Workshop Competency Test*, click on the "*Science Workshop Analog Interfacing*" icon in the *Intermediate Labs Folder*. This will bring up a *Science Workshop Experiment*, which is a set of windows to run the tutorial. You should see the "*Experiment Setup Window*" and the "*Experiment Notes Window*" as shown below.

Click the down arrow on the scroll bar at the right edge of the "*Experiment Notes Window*" to proceed with more instructions. The *Quick Reference Card* provides a very handy summary of the basic capabilities of *Science Workshop* and how to perform various tasks using the software. Detailed information is available in the *User's Guide* and the *Reference Sheets* for specific sensors.



Note: Before you start Windows, connect the SCSI cable from the interface to the computer and turn on the interface power. You may connect the sensors at a later time. If not connected properly, *Science Workshop* will display the message "*Interface Not Found*".